

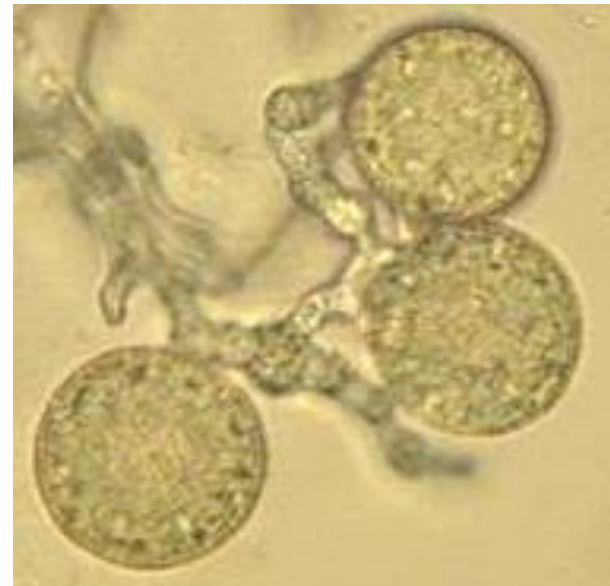
# The United Kingdom Biological Resource Centre Network

Bringing together the UK's expert centres in biological resource curation

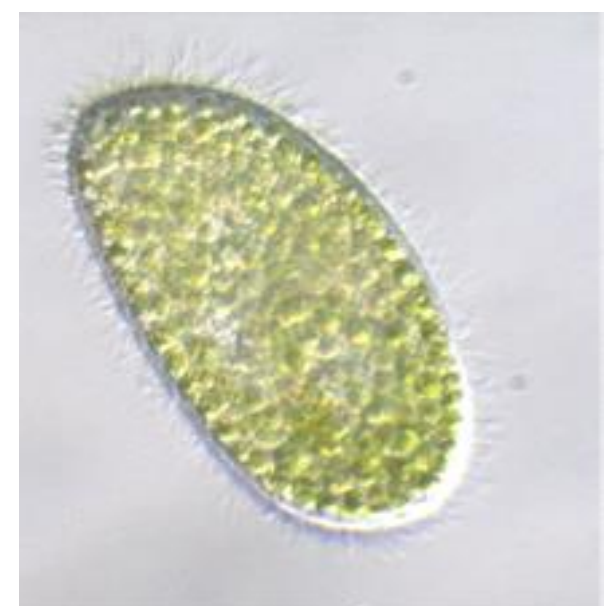
Algae Animal Cells Bacteria Fungi Human Cells Prions Protozoa Stem Cells Viruses Yeast

## Key Objectives

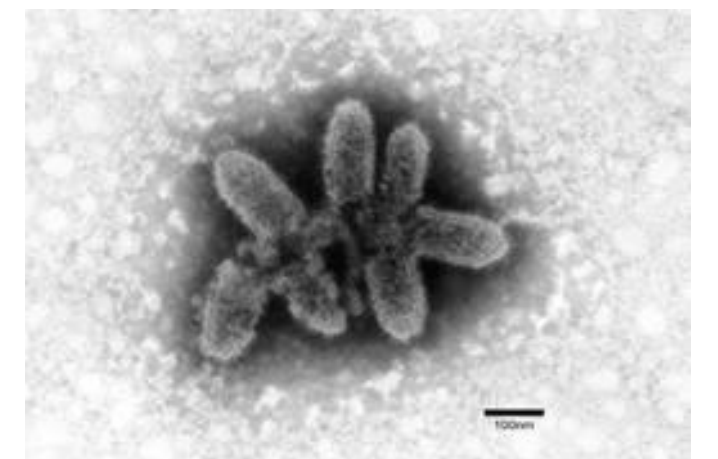
- **Co-ordinate engagement with users and common stakeholders** (editorial boards, grant funding authorities, UK government etc.)
- **Share best practice** regarding quality and compliance, ensuring that users of living genetic resources and collections operate within the law. Further, work with resource-limited countries to facilitate knowledge transfer as part of the UK commitment to the UN Millennium Goals (<http://www.un.org/millenniumgoals>)
- **Provide a central expert resource** to inform the user community of developments in legislation that may influence research, such as the Nagoya Protocol.
- **Provide expert responses and solutions** to the problems faced by those working with and harnessing biological resources.
- **Raise awareness** of the value of Culture Collections to the scientific community by providing information and training
- **Coordinate grant applications** in key areas of research to enhance scientific procedures and services of the UK BRCs, in support of British industry.
- **Form the UK node of the EU ESFRI MIRRI project**, a large EU infrastructure multi-partner consortium of biological resource centres.



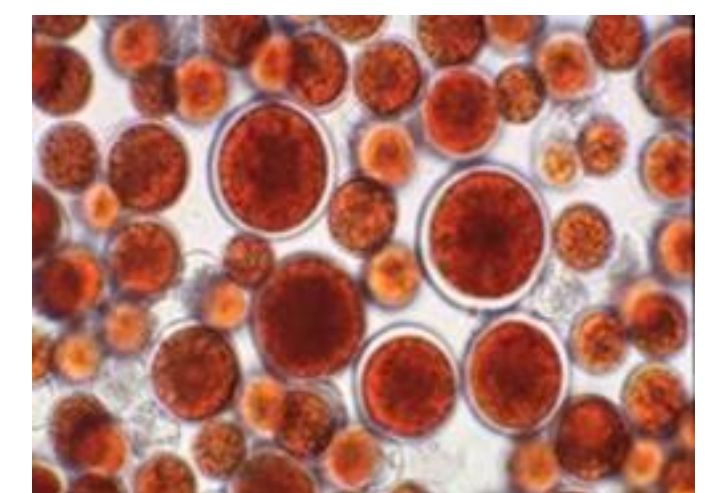
Phytophthora sp. A common plant pathogen (courtesy of CABI)



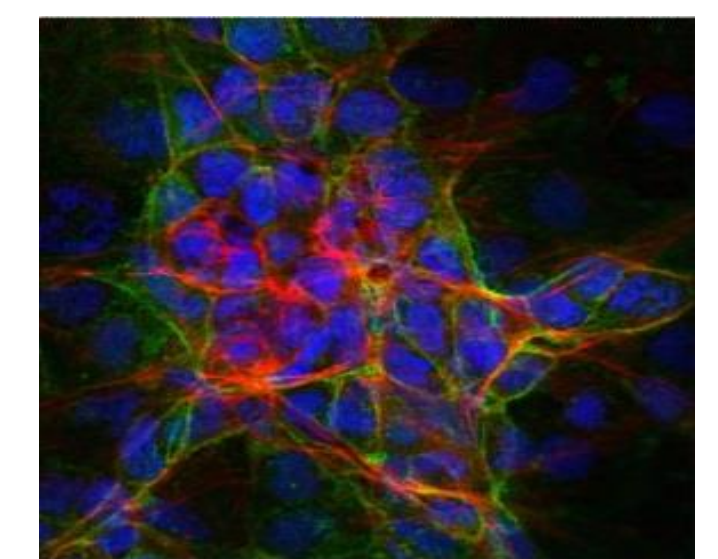
Paramecium bursaria a ciliate protozoan containing symbiotic algae (courtesy of CCAP)



Electron micrograph of Rabies Virus (courtesy of Bill Cooley, APHA-Weybridge)



Haemotococcus sp. an alga that produces the pigment astaxanthin (courtesy of CCAP)



Stem cells (courtesy of NIBSC-MHRA)



## Partner collections

BRC [Host]	Organisms and Coverage		weblink
APHA [Department for Environment, Food and Rural Affairs (Defra)]	Animal and plant microbes of veterinary and medical importance, mainly including viruses and bacteria.		<a href="http://www.gov.uk/government/organisations/animal-and-plant-health-agency">www.gov.uk/government/organisations/animal-and-plant-health-agency</a>
CABI Genetic Resources Collection (IMI) [CAB International]	Fungi (as part of the UK collection of Fungus Cultures) & Bacteria of agricultural & environmental importance		<a href="http://www.cabi.org">www.cabi.org</a>
The Culture Collection of Algae and Protozoa (CCAP) [Scottish Association for Marine Science (SAMS)]	Cyanobacteria, Protists (algae and protozoa) and seaweeds		<a href="http://www.ccap.ac.uk">www.ccap.ac.uk</a>
Public Health England (PHE) Collections: European Collection of Cell Cultures (ECACC) National Collection of Type Cultures (NCTC) National Collection of Pathogenic Fungi (NCPF) National Collection of Pathogenic Viruses (NCPV)	Human & animal cell lines; Fungi, Bacteria and Viruses of medical importance		<a href="https://www.phe-culturecollections.org.uk">https://www.phe-culturecollections.org.uk</a>
National Collection of Industrial and Marine Bacteria (NCIMB)	Bacteria of industrial and environmental importance		<a href="http://www.ncimb.com">www.ncimb.com</a>
National Collection of Plant Pathogenic Bacteria (NCPFB) [Fera Science Ltd]	Phytopathogenic Bacteria		<a href="http://www.ncppb.co.uk">www.ncppb.co.uk</a>
National Collection of Yeast Cultures (NCYC) [Institute of Food Research]	Yeasts		<a href="http://www.ncyc.co.uk">www.ncyc.co.uk</a>
UK Stem Cell Bank [MRC/BBSRC funded/NIBSC-MHRA]	Stem Cell lines and feeder cells		<a href="http://www.nibsc.org/ukstemcellbank">http://www.nibsc.org/ukstemcellbank</a>

Culture Supply ○ Patent Deposit ○ Safe deposit ○ Identification ○ Characterisation ○ Consultancy ○ Cell line authentication testing  
○ Biosecurity ○ Training ○ Research ○ Contract Freeze Drying ○ Invasive species management ○ Animal / plant health

[www.ukbrcn.org](http://www.ukbrcn.org)